

results NIOSH - sample 1

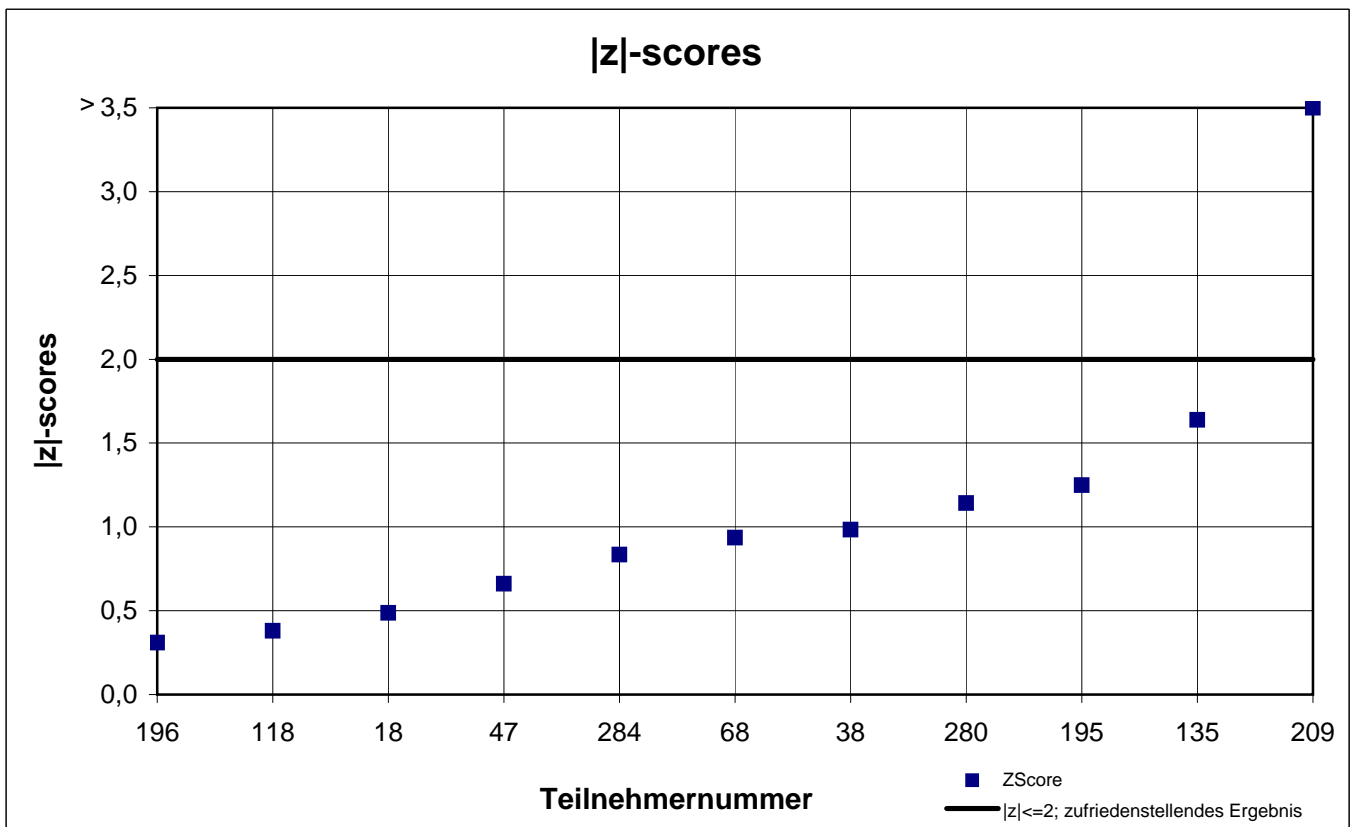
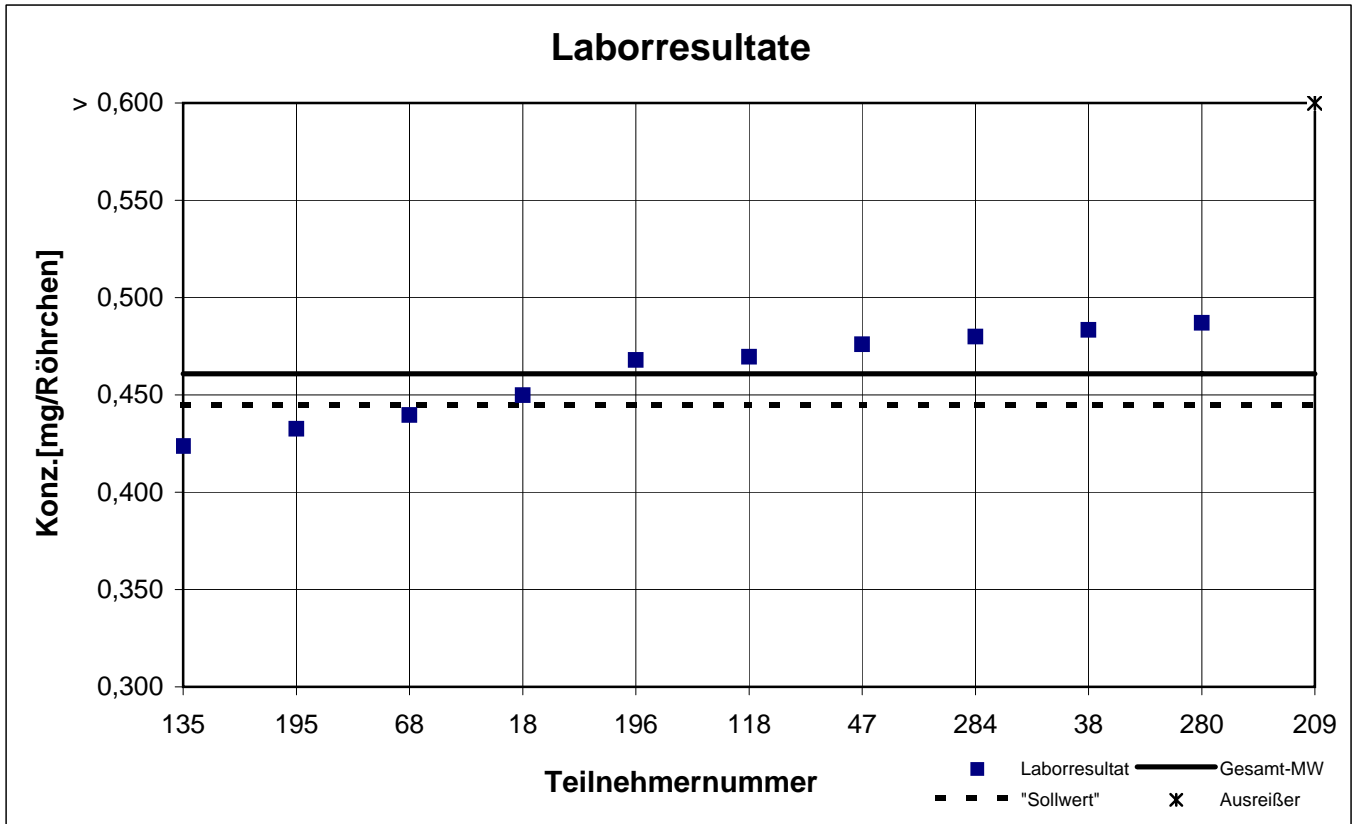
participant number	i-butyl acetate		n-butyl acetate		o-xylene	
	result [mg/tube]	z - score	result [mg/tube]	z - score	result [mg/tube]	z - score
18	0,450	0,5	0,082	1,4	0,076	0,2
38	0,483	1,0	0,073	0,1	0,072	0,5
47	0,476	0,7	0,079	0,9	0,067	1,5
68	0,440	0,9	0,074	0,3	0,077	0,2
79	k.A.	k.A.	k.A.	k.A.	0,087	1,9
118	0,470	0,4	0,082	1,4	0,079	0,5
135	0,424	1,6	0,065	1,0	0,066	1,5
195	0,433	1,2	0,062	1,3	0,074	0,3
196	0,468	0,3	0,076	0,6	0,081	0,9
209	14,59	620	1,733	231	k.A.	k.A.
256	k.A.	k.A.	0,068	0,5	0,068	1,1
258	k.A.	k.A.	0,116	6,1	0,080	0,8
280	0,487	1,1	0,051	3,0	0,079	0,5
281	k.A.	k.A.	k.A.	k.A.	0,070	0,9
284	0,480	0,8	0,080	1,1	0,080	0,8

marked fields are outliers!

	i-butyl acetate	n-butyl acetate	o-xylene
mean c_k [mg / tube]	0,461	0,072	0,075
standard deviation S_k [mg / tube]	0,0227	0,0097	0,0060
relative standard deviation [%]	4,94	13,57	8,08

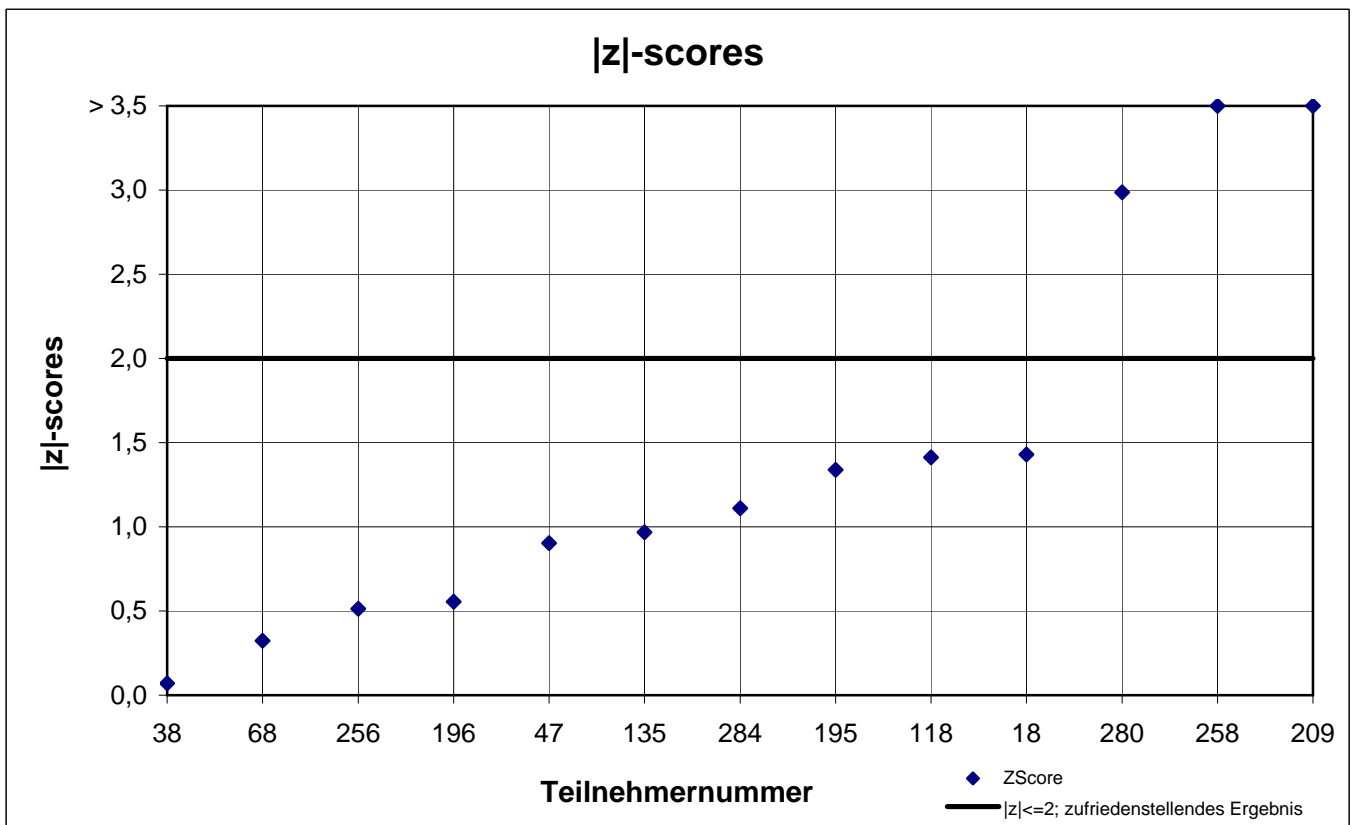
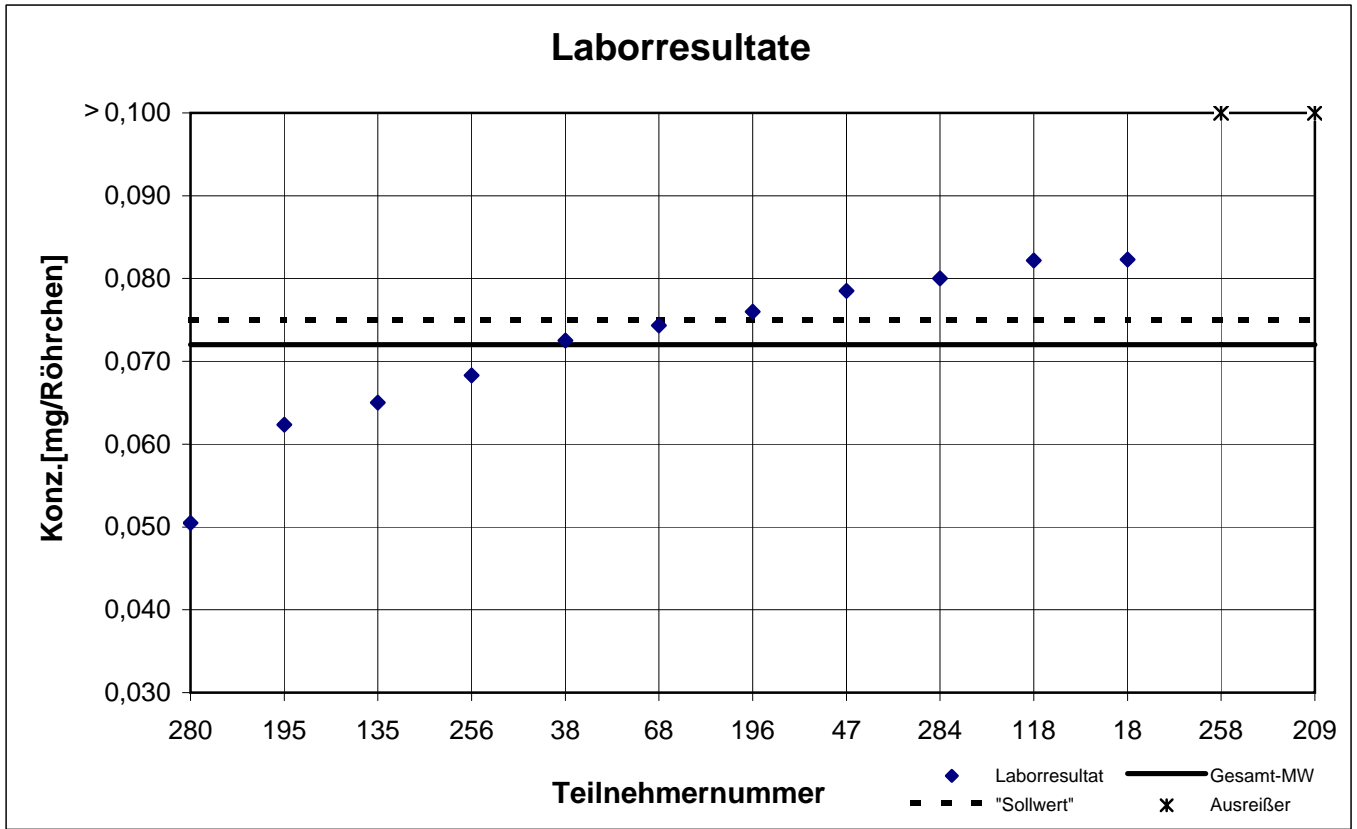
NIOSH -Probe 1

i-Butylacetat



NIOSH -Probe 1

n-Butylacetat



results NIOSH - sample 2

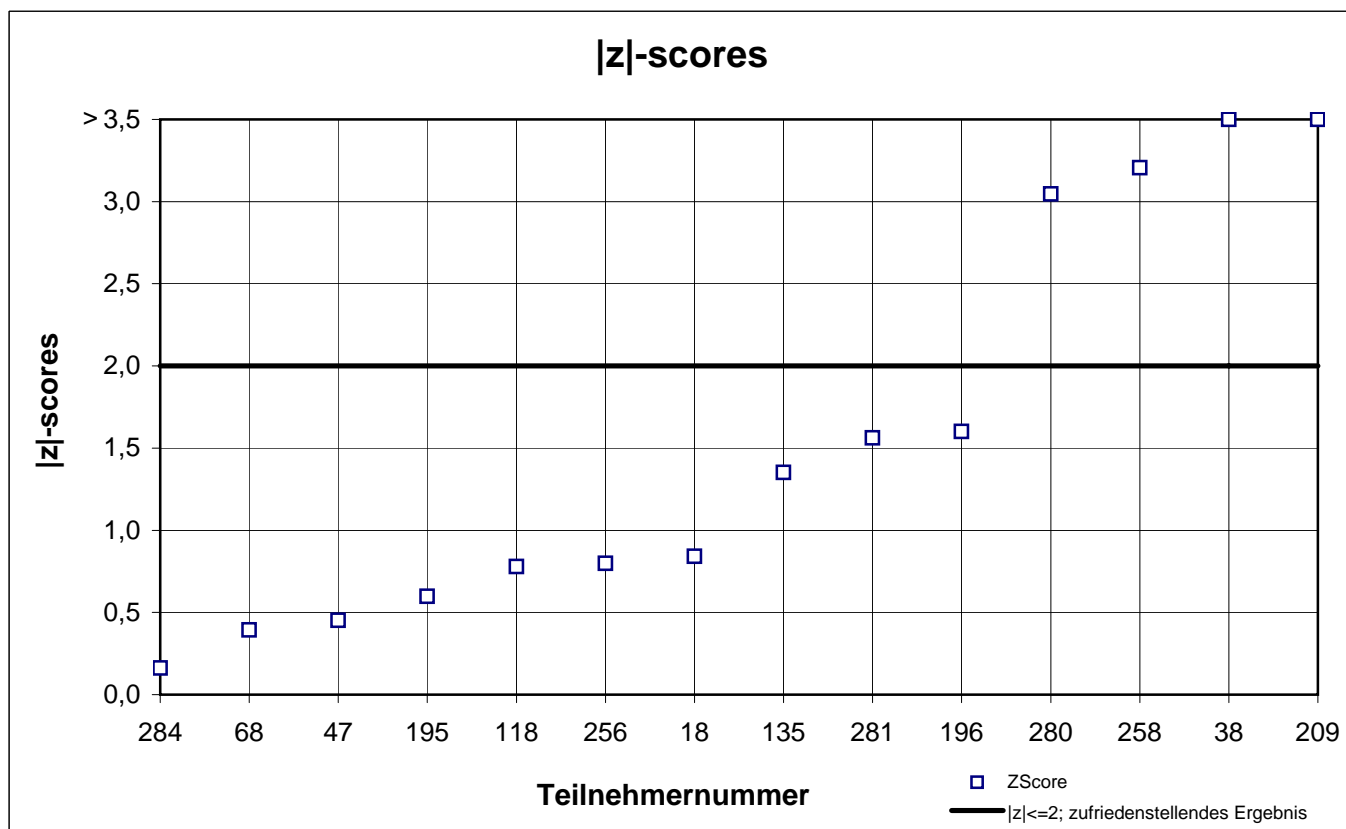
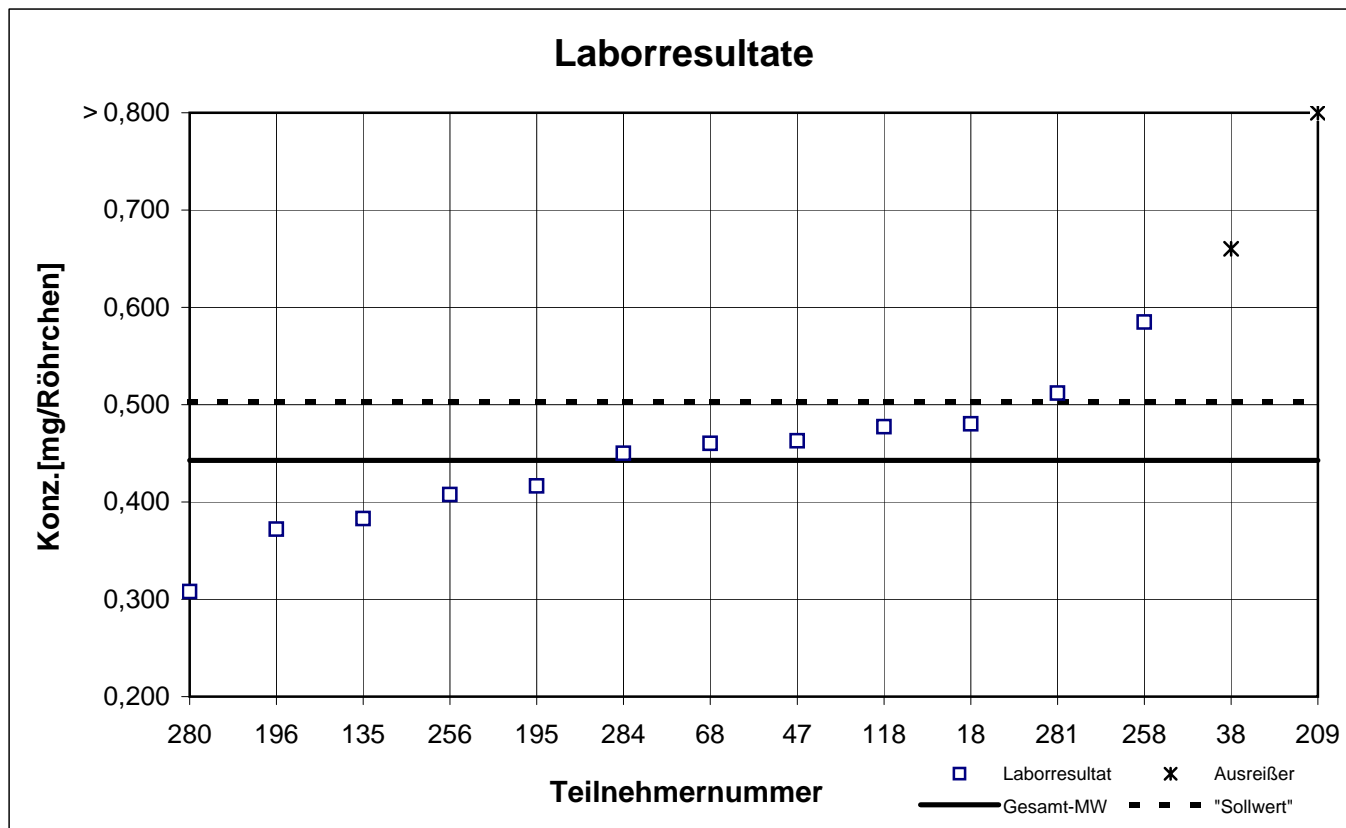
participant number	ethyl acetate		n-heptane		o-xylene		toluene	
	result [mg/tube]	z - score	result [mg/tube]	z - score	result [mg/tube]	z - score	result [mg/tube]	z - score
18	0,480	0,8	0,588	1,9	0,126	5,0	2,645	3,3
38	0,660	4,9	0,503	0,2	0,060	2,8	1,985	0,0
47	0,463	0,5	0,478	0,3	0,106	2,6	1,949	0,2
68	0,460	0,4	0,504	0,2	0,088	0,5	2,035	0,2
79	k.A.	k.A.	0,440	1,1	0,099	1,8	1,977	0,1
118	0,477	0,8	0,491	0,0	0,090	0,7	2,033	0,2
135	0,383	1,4	0,494	0,0	0,084	0,0	1,911	0,4
195	0,416	0,6	0,561	1,4	0,084	0,0	2,101	0,5
196	0,372	1,6	0,437	1,1	0,096	1,4	2,000	0,0
209	15,04	330	15,50	305	2,650	305	66,27	323
256	0,408	0,8	k.A.	k.A.	0,080	0,5	1,741	1,3
258	0,585	3,2	0,546	1,1	0,089	0,6	2,309	1,6
280	0,308	3,0	0,400	1,9	0,062	2,7	1,460	2,7
281	0,512	1,6	0,525	0,7	0,086	0,2	1,854	0,7
284	0,450	0,2	0,440	1,1	0,070	1,7	1,900	0,5

 marked fields are outliers!

	ethyl acetate	n-heptane	o-xylene	toluene
mean c_k [mg / tube]	0,443	0,493	0,084	1,993
standard deviation S_k [mg / tube]	0,0719	0,0543	0,0135	0,2667
relative standard deviation [%]	16,26	11,03	16,16	13,39

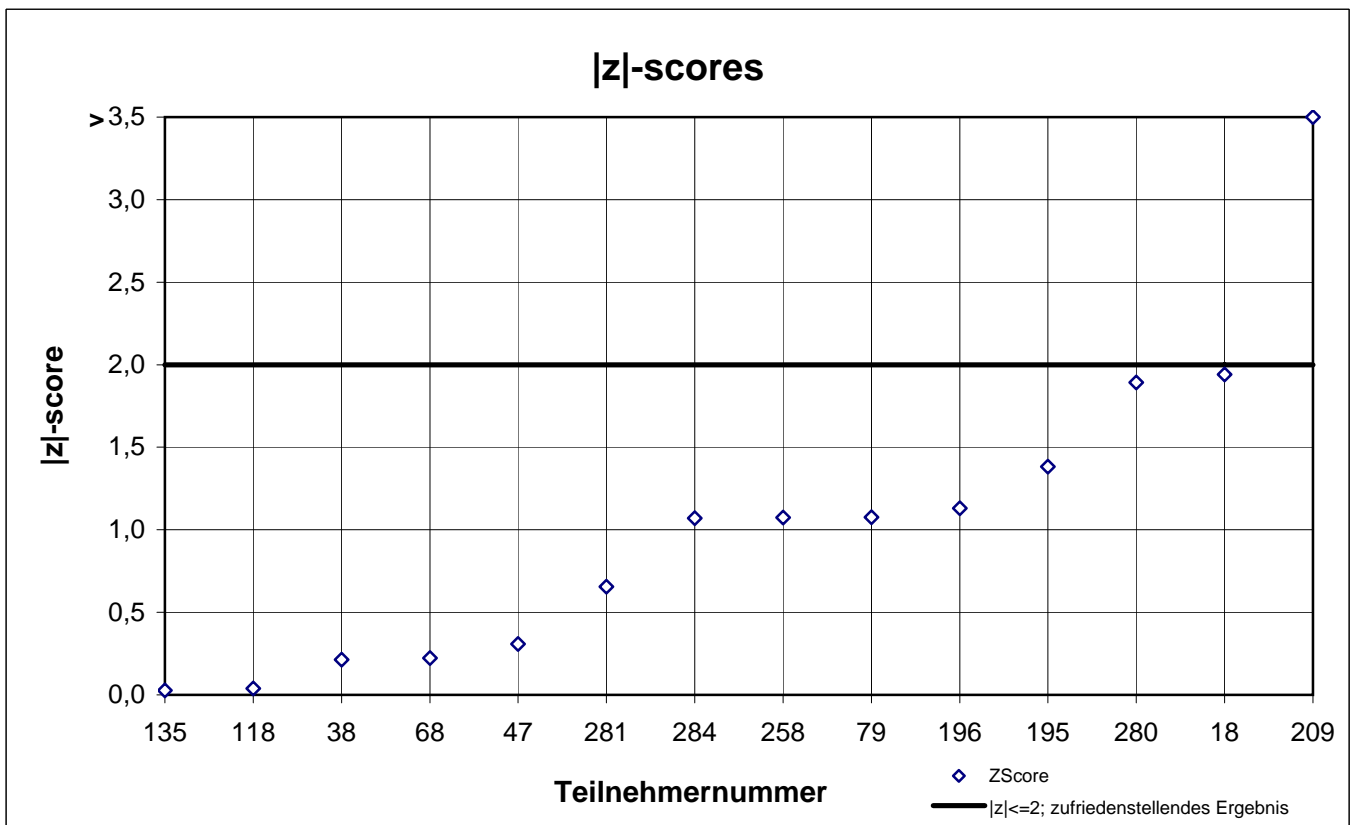
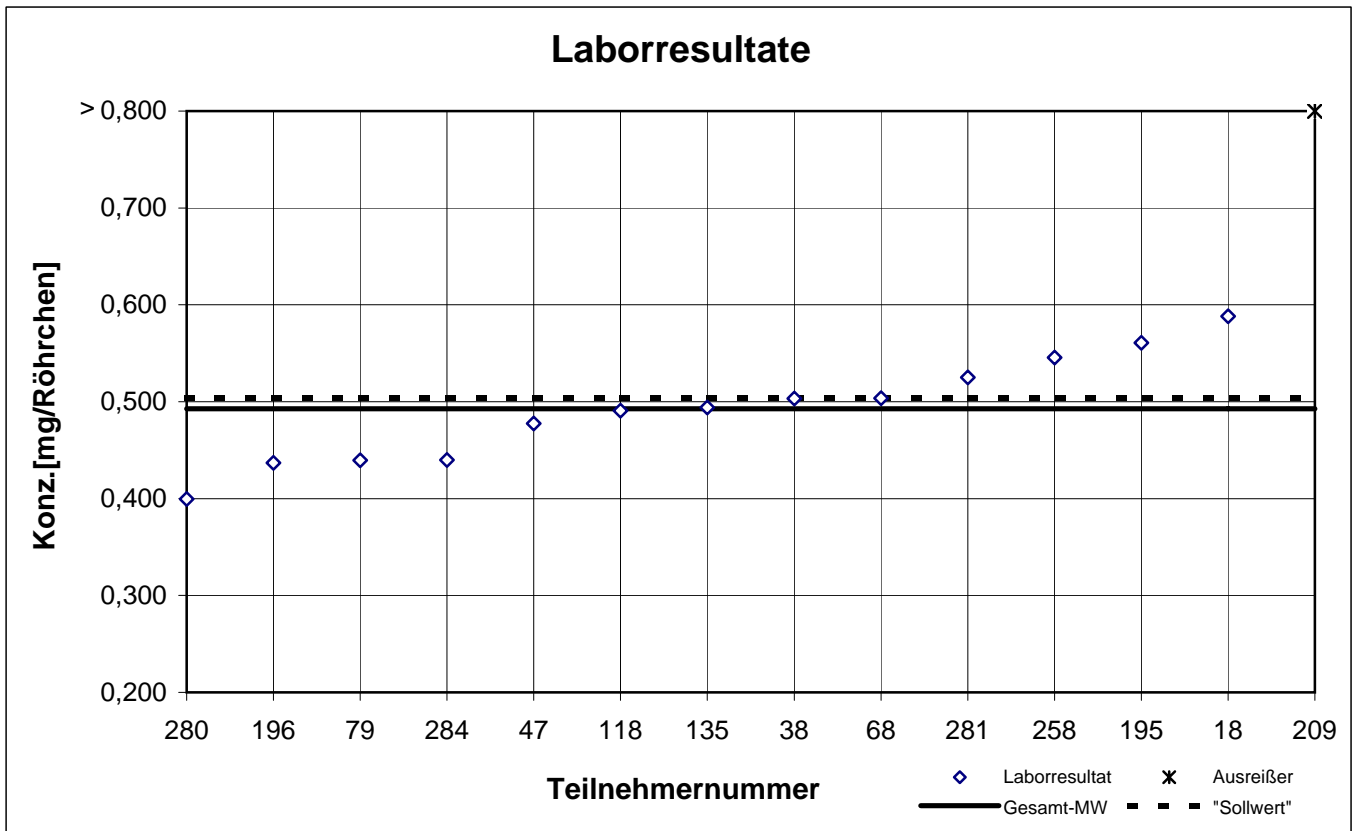
NIOSH -Probe 2

Ethylacetat



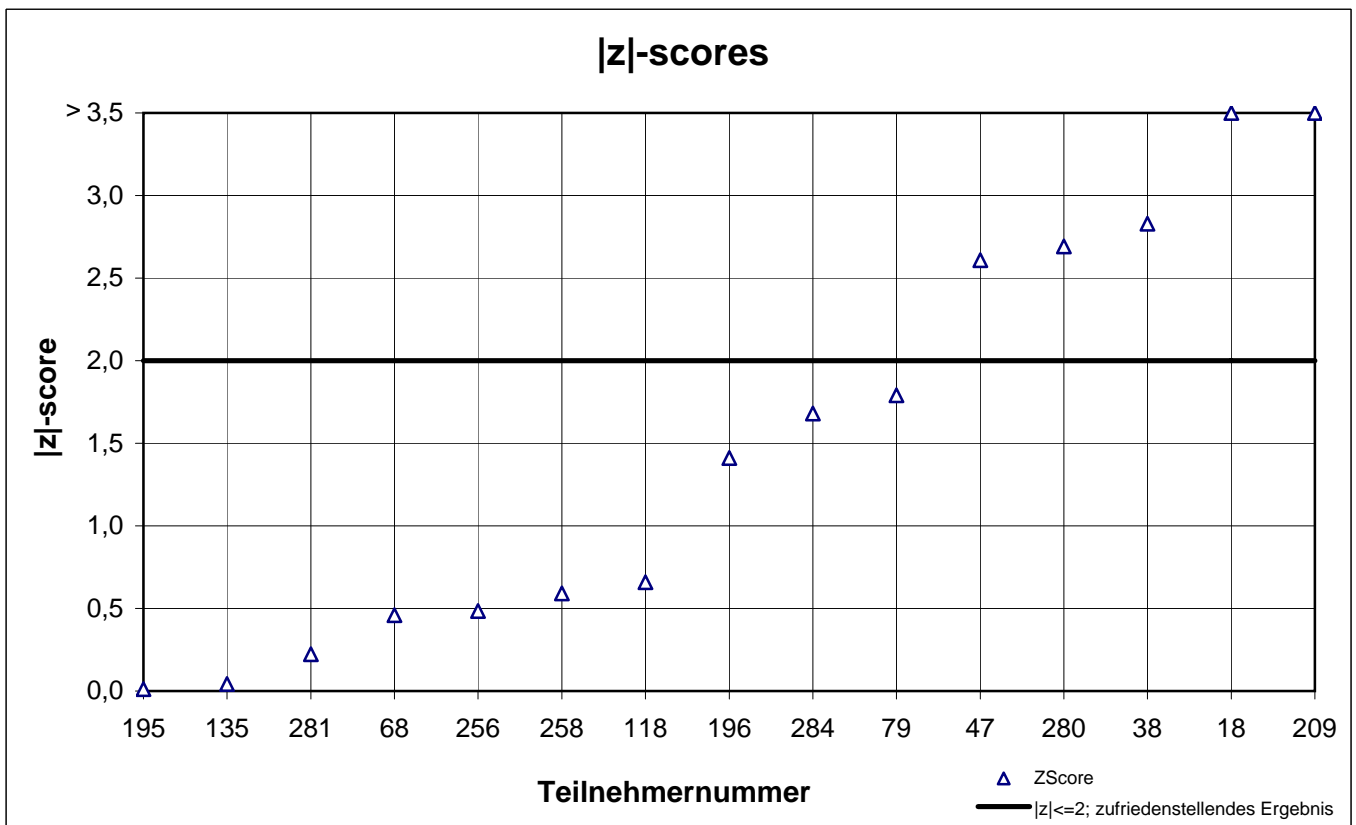
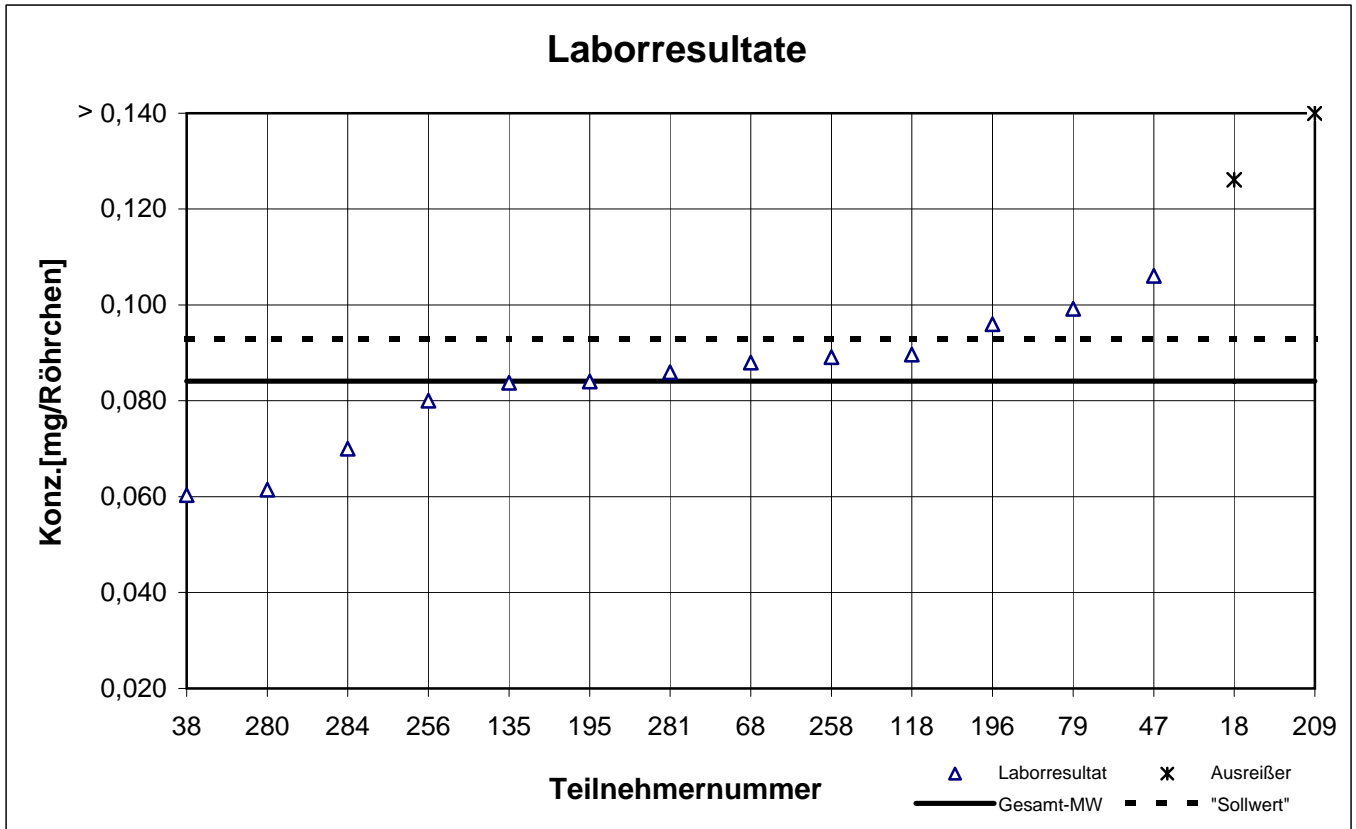
NIOSH -Probe 2

n-Heptan



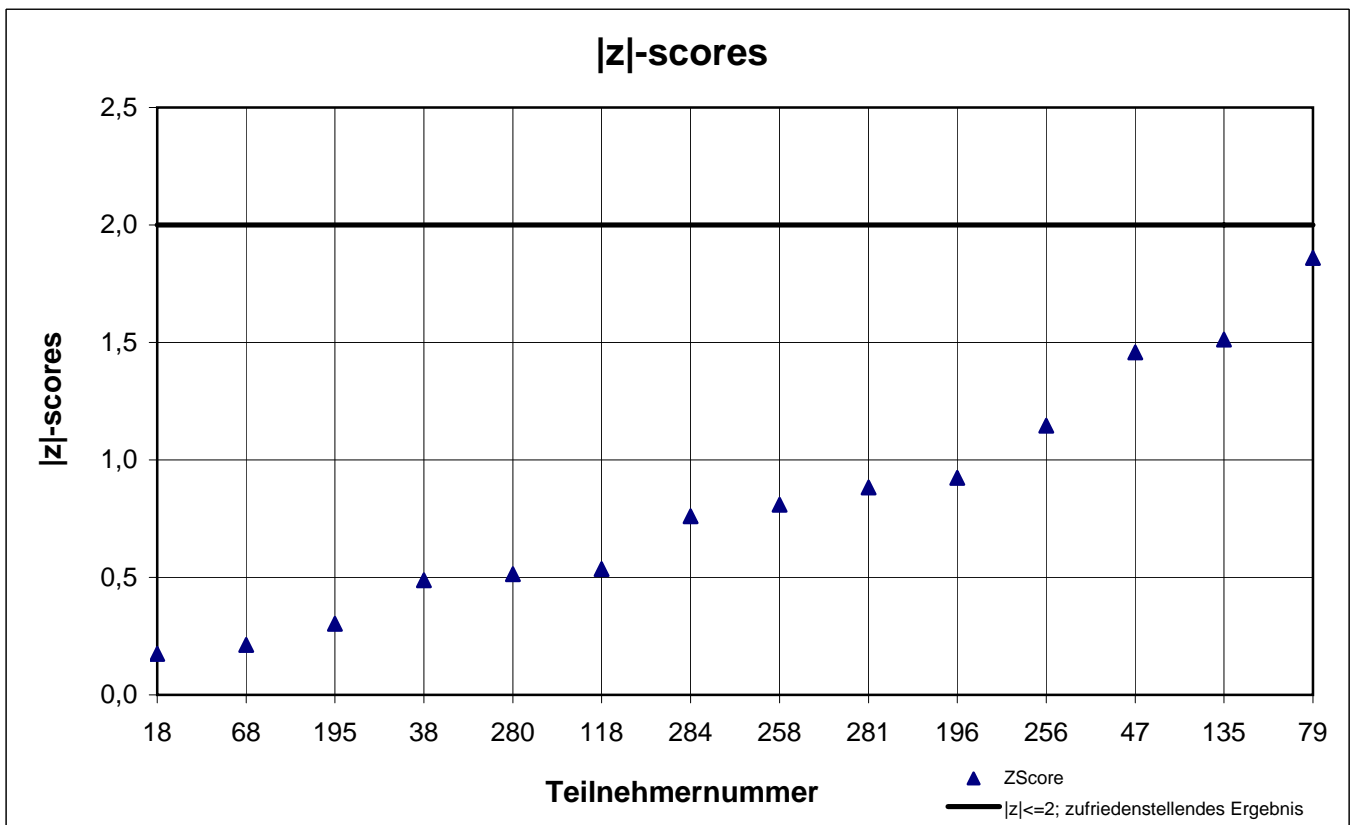
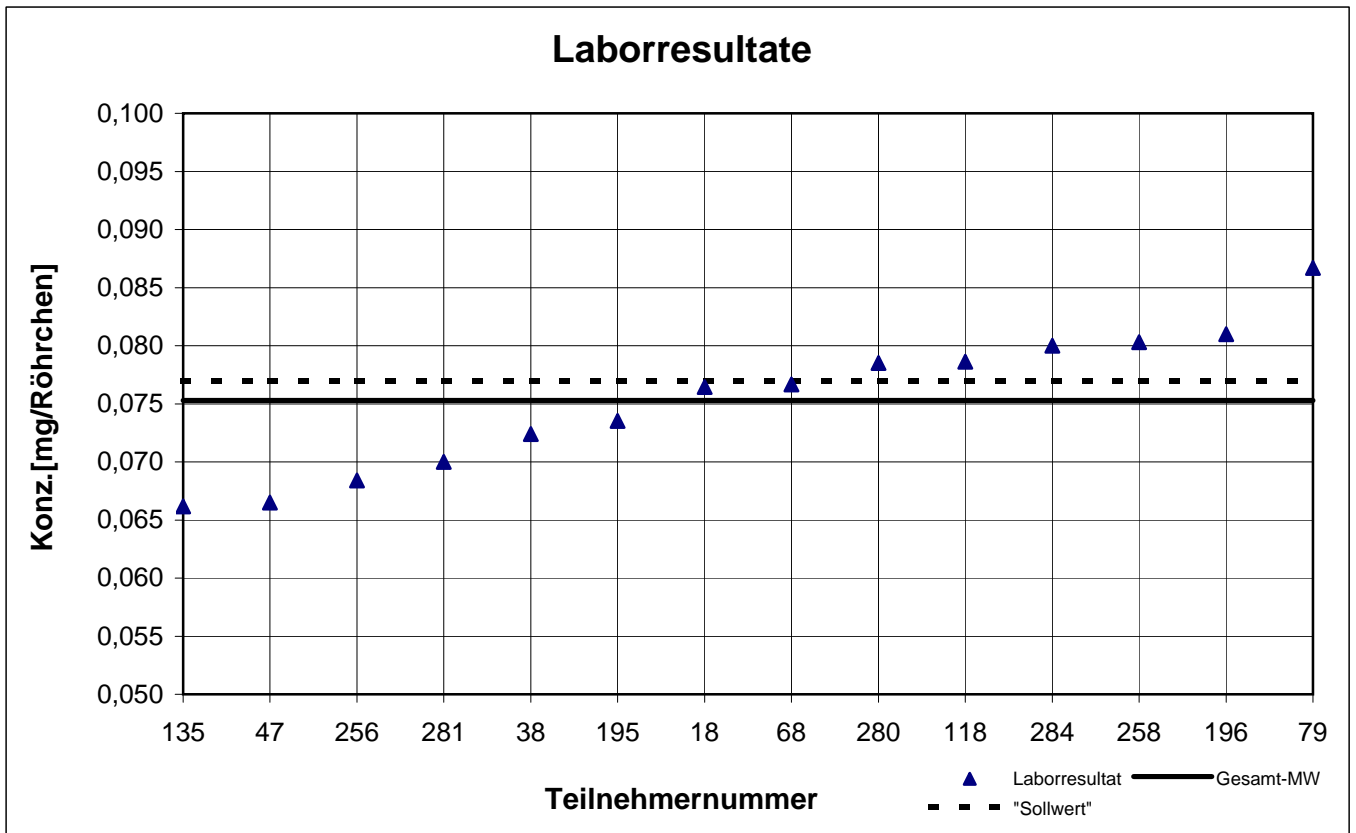
NIOSH -Probe 2

o-Xylol



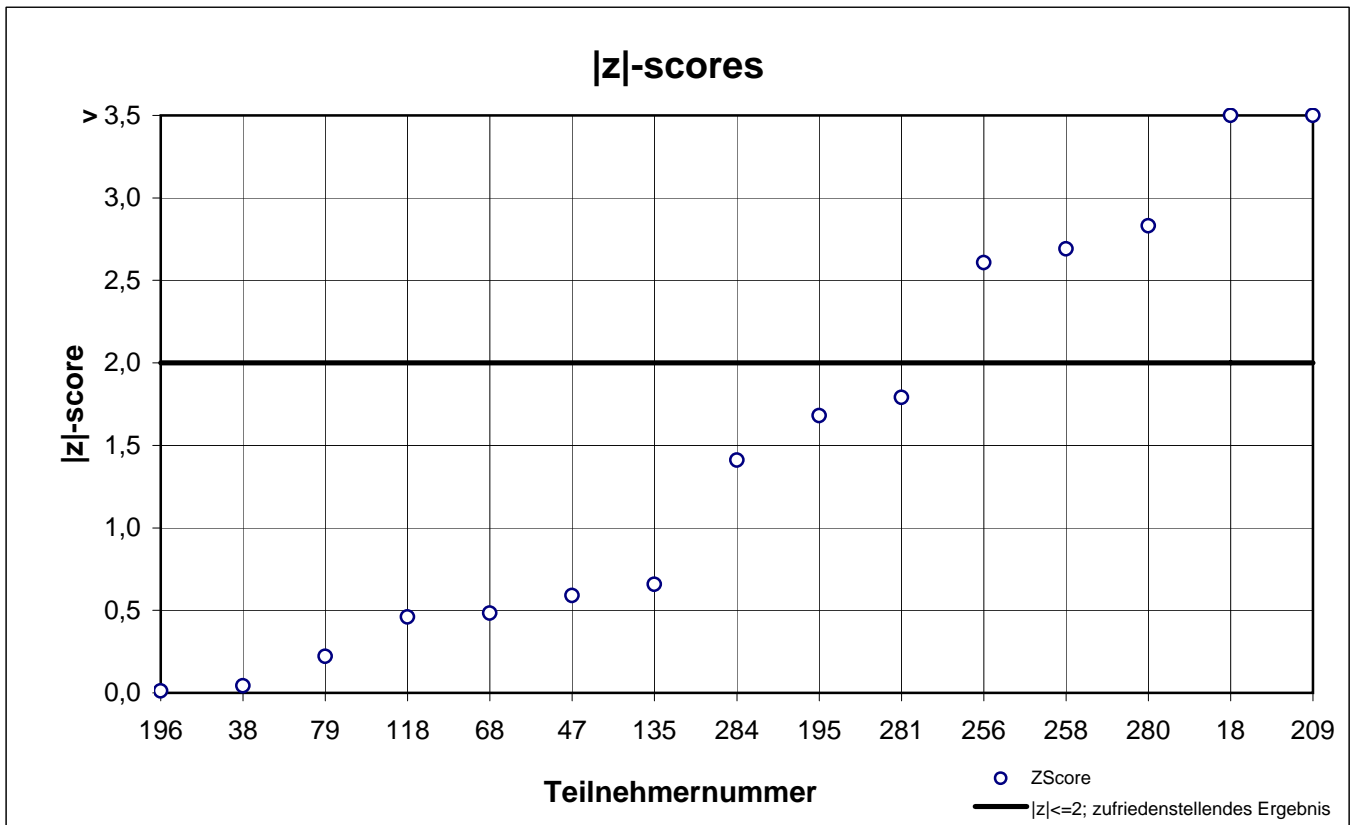
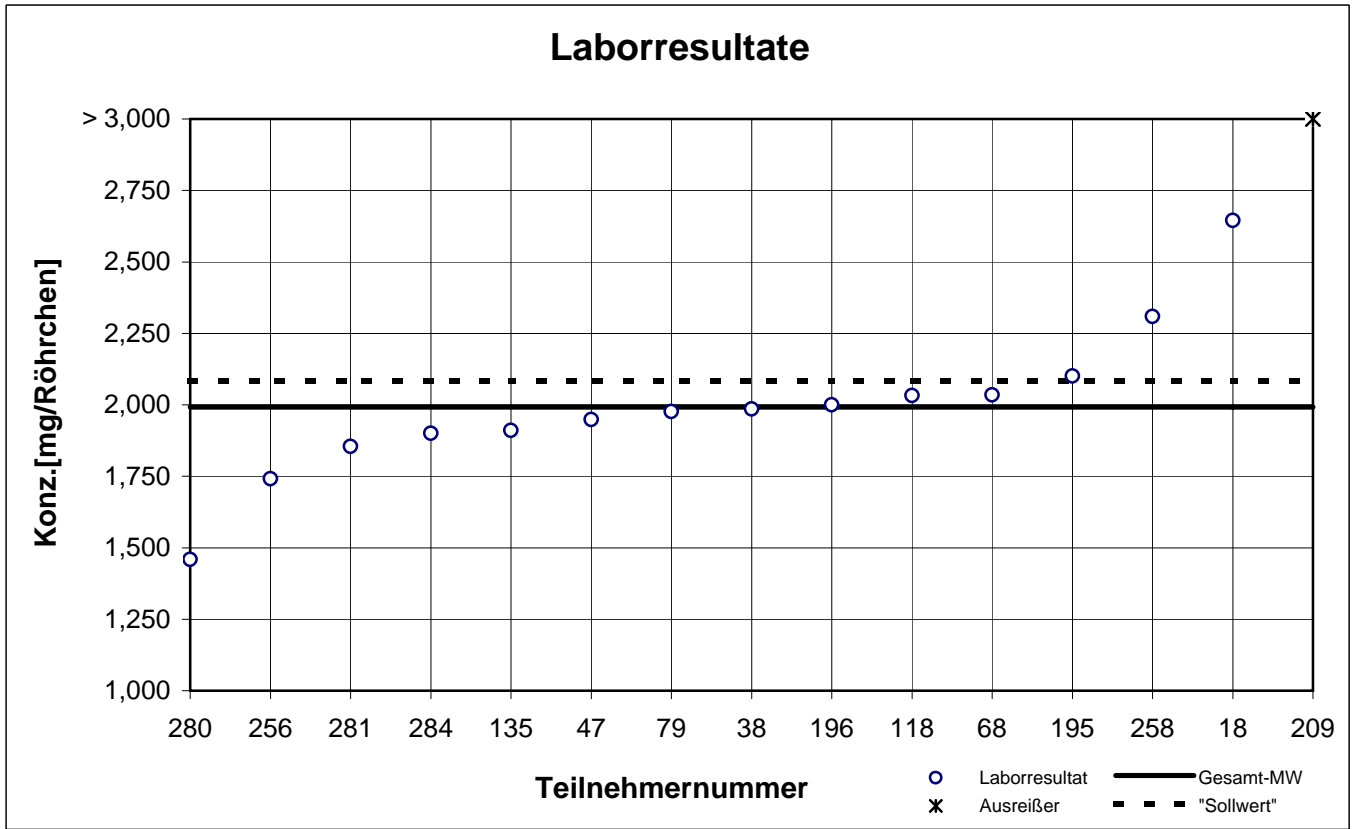
NIOSH -Probe 1

o-Xylol



NIOSH -Probe 2

Toluol



results NIOSH - sample 3

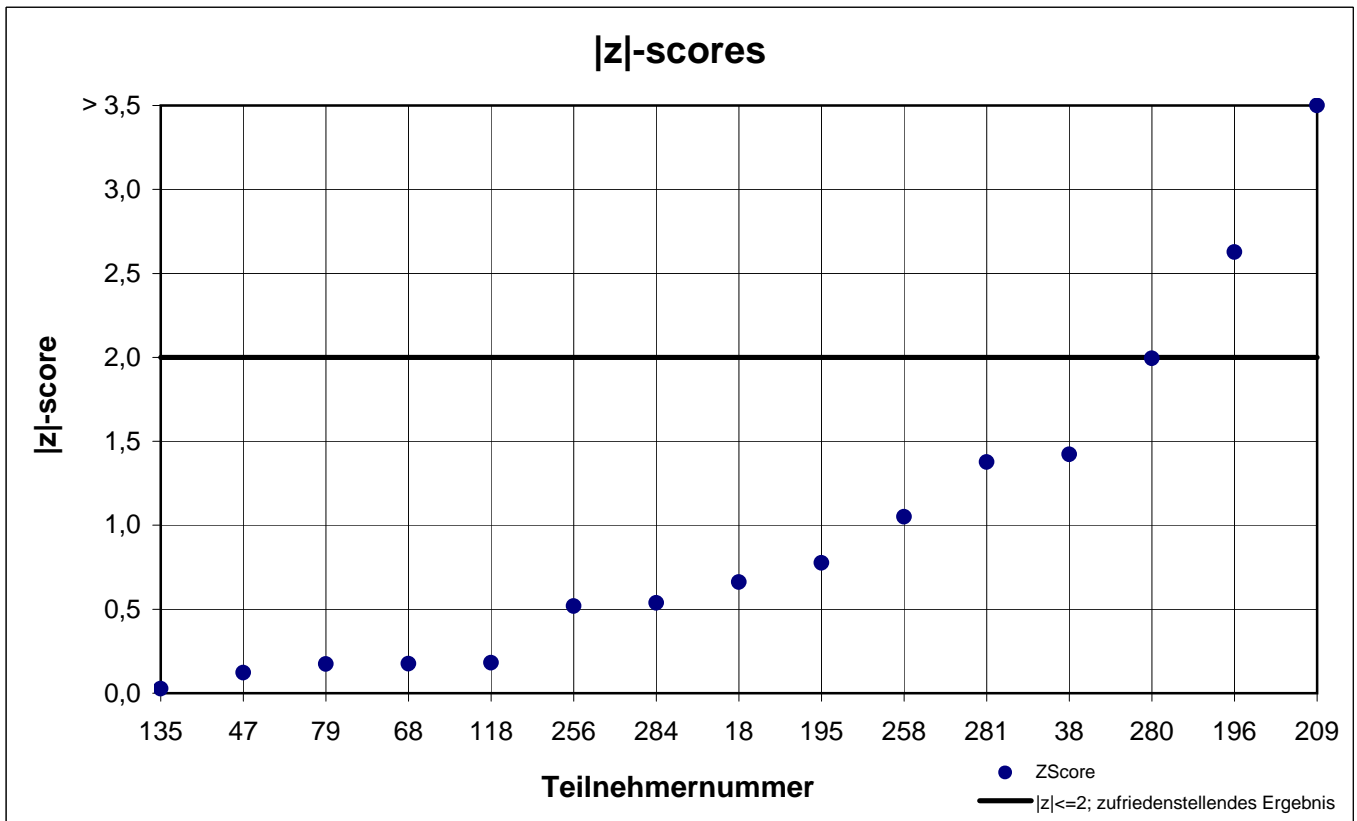
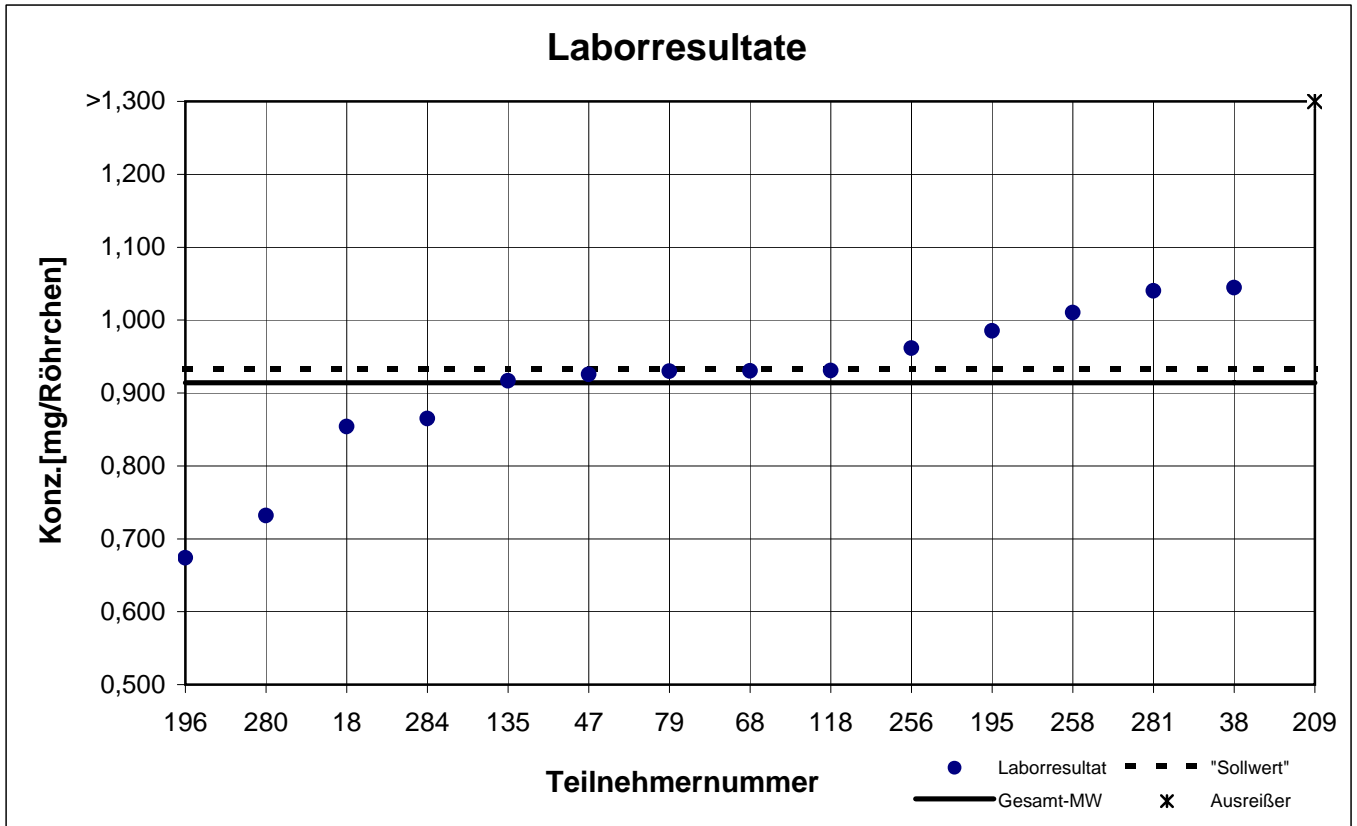
participant number	n-hexane		toluene		trichlorethene	
	result [mg/tube]	z - score	result [mg/tube]	z - score	result [mg/tube]	z - score
18	0,854	0,7	0,212	0,8	0,403	0,8
38	1,044	1,4	0,215	0,7	0,481	1,0
47	0,925	0,1	0,254	1,0	0,435	0,0
68	0,930	0,2	0,232	0,1	0,453	0,4
79	0,930	0,2	0,261	1,3	k.A.	k.A.
118	0,931	0,2	0,242	0,5	0,452	0,4
135	0,917	0,0	0,287	2,4	0,529	2,1
195	0,985	0,8	0,239	0,4	0,486	1,2
196	0,674	2,6	0,155	3,3	0,377	1,4
209	29,66	314	7,713	324	14,29	318
256	0,962	0,5	0,224	0,3	k.A.	k.A.
258	1,010	1,0	0,211	0,8	k.A.	k.A.
280	0,732	2,0	0,267	1,6	0,286	3,4
281	1,040	1,4	0,220	0,5	k.A.	k.A.
284	0,865	0,5	0,210	0,9	0,460	0,5

marked fields are outliers!

	n-hexane	toluene	trichlor-ethene
mean c_k [mg / tube]	0,914	0,231	0,436
standard deviation S_k [mg / tube]	0,1063	0,0321	0,0678
relative standard deviation [%]	11,64	13,94	15,55

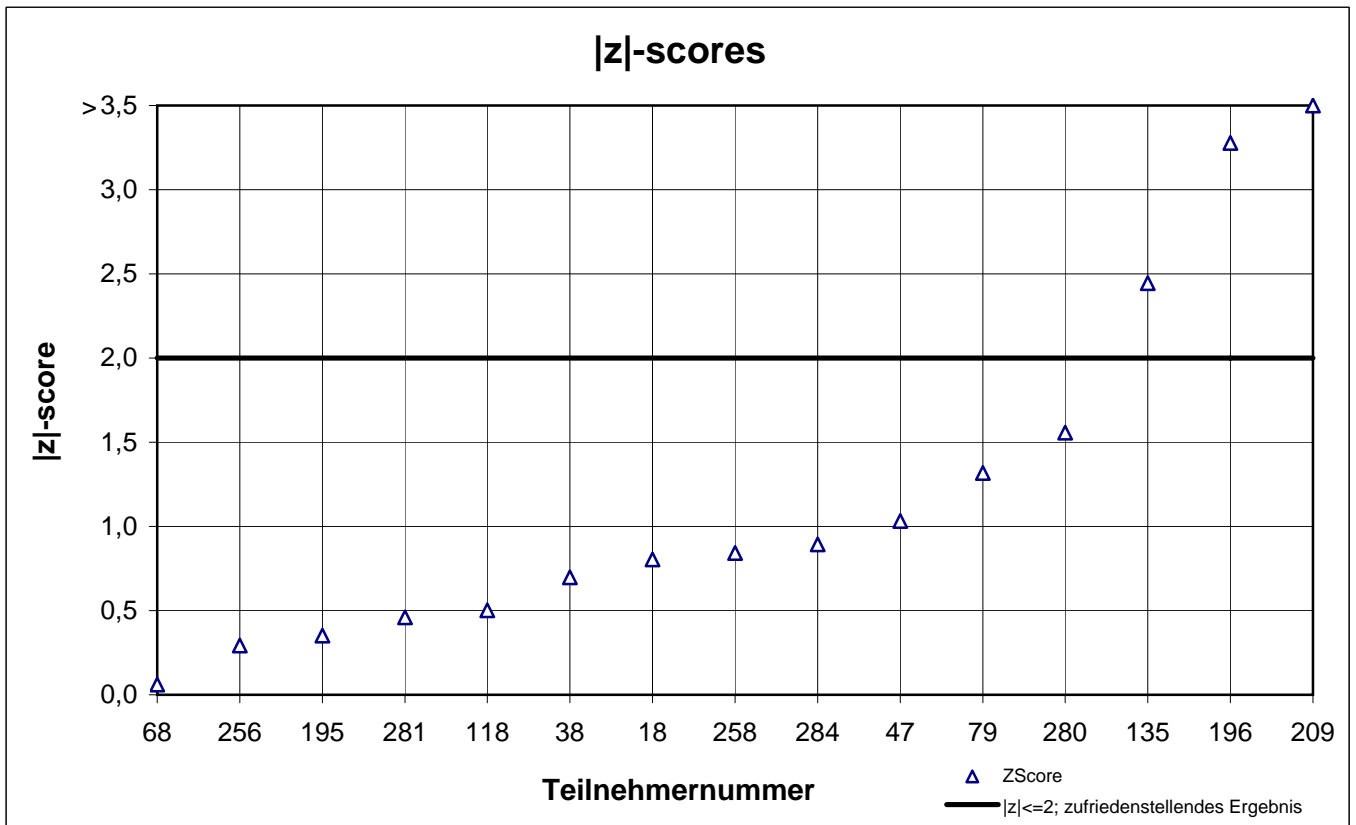
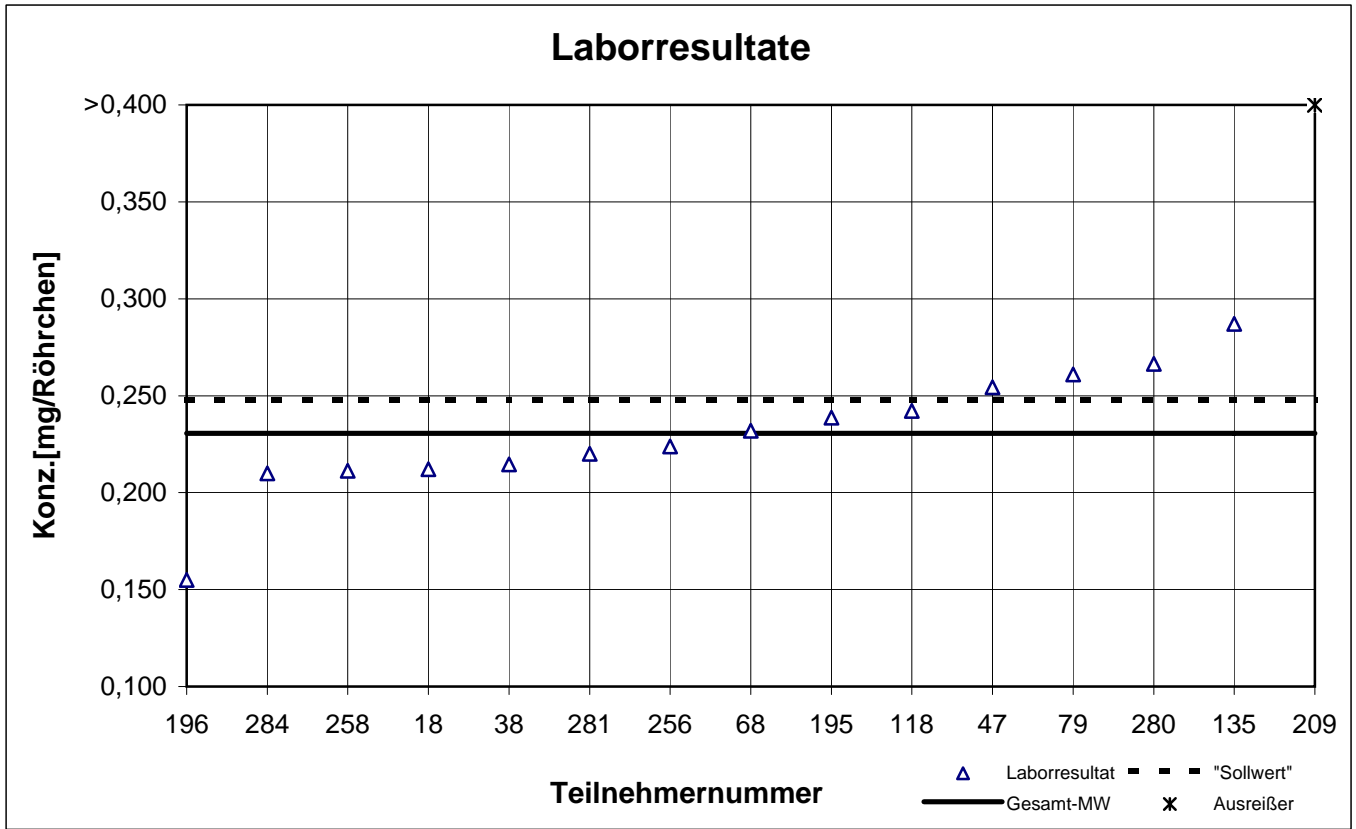
NIOSH -Probe 3

n-Hexan



NIOSH -Probe 3

Toluol



NIOSH -Probe 3

Trichlorethen

